

Where technology meets dentistry

PALTOP

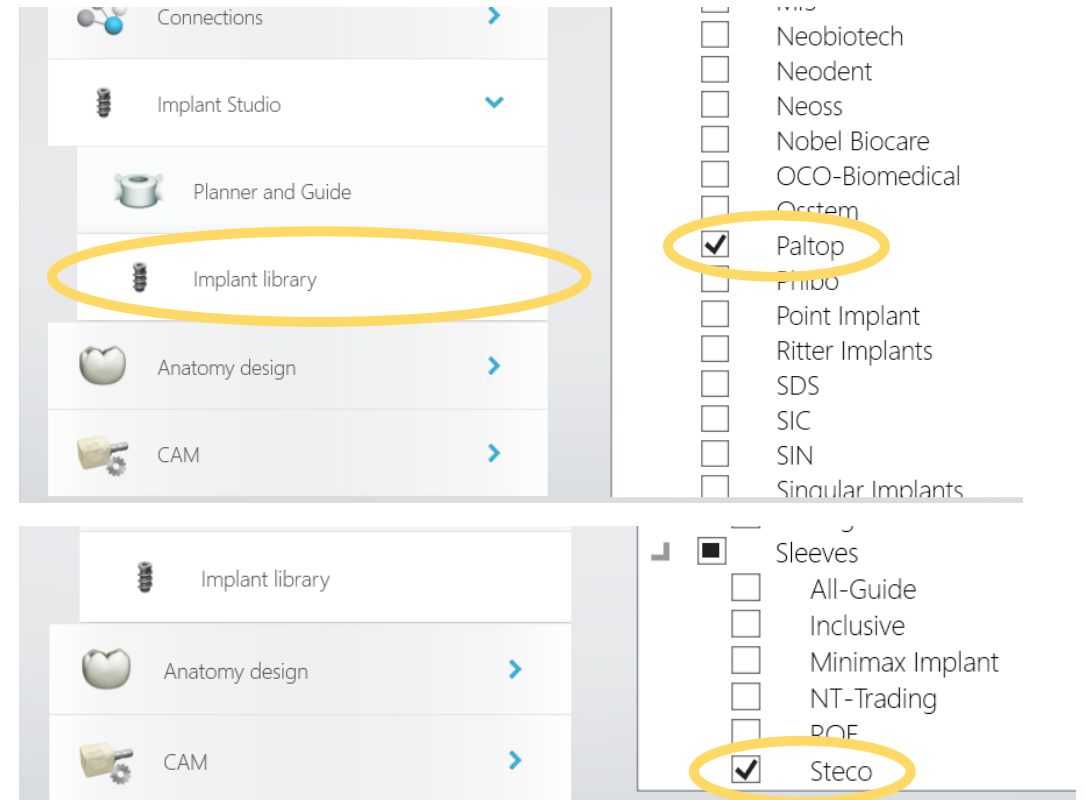
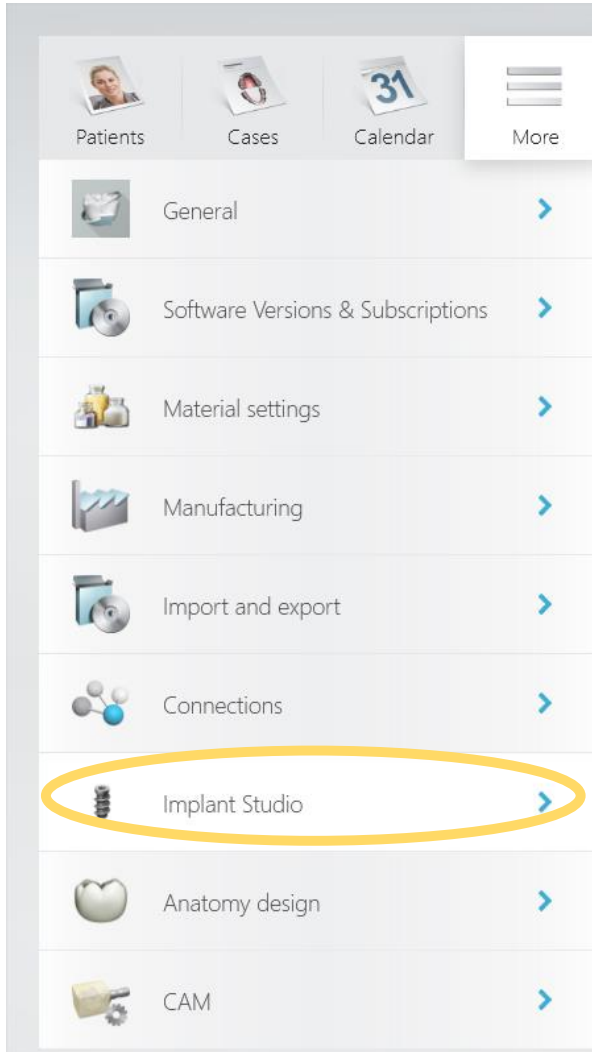
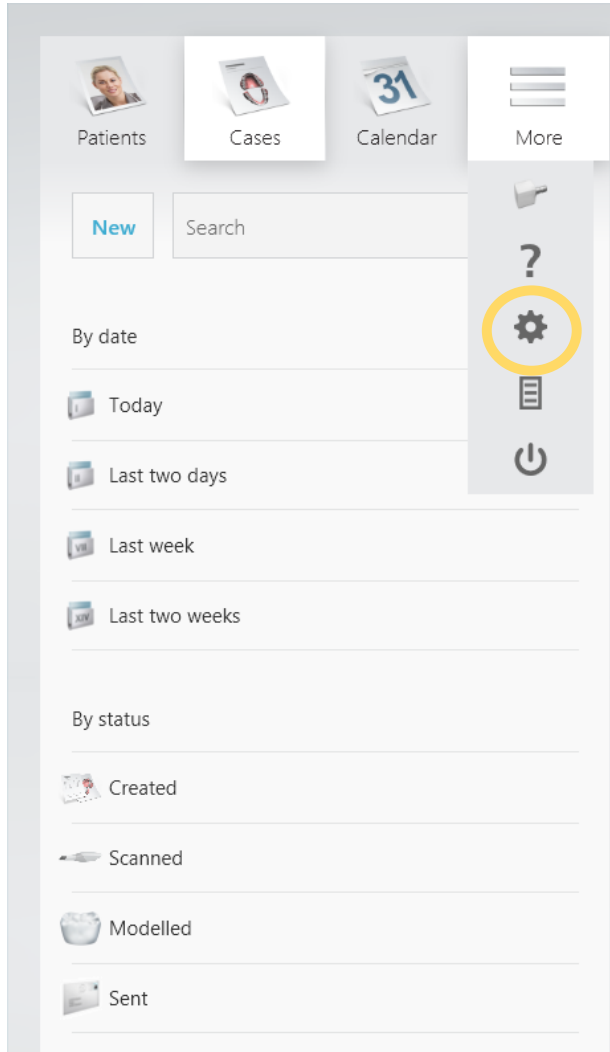


Working with paltop digital library in 3shape implant studio



Mr. Philip Segal, MDT
Digital CAD/CAM Manager

Download the pal^{top} implant library & Steco sleeves



Set Surgical Guide settings in accordance with your 3d printer



The screenshot displays the 'Planner and Guide' section of the PALTOP Digital software. The left sidebar contains navigation options: Patients, Cases, Calendar, More, General, Software Versions & Subscriptions, Material settings, Manufacturing, Import and export, Connections, Implant Studio, Planner and Guide (selected), Implant library, Anatomy design, and CAM. The main area is titled 'Planner and Guide' and contains two sub-sections: 'Implant planning settings' and 'Surgical guide settings'. The 'Surgical guide settings' section is highlighted with a yellow circle. It includes a dropdown menu for 'Default manufacturer' set to 'Stratasys Eden 260V/350V/500V / OrthoDesk - MED610', also highlighted with a yellow circle. Below this are five input fields for various settings: 'Guide thickness' (2.800 mm), 'Offset from teeth to guide' (0.075 mm), 'Retention amount' (0.000 mm), 'Offset from sleeve to guide' (0.100 mm, highlighted with a yellow circle), and 'Offset from teeth to guide' (0.075 mm). The 'Offset from sleeve to guide' setting is highlighted with a yellow circle.

Planner and Guide

Implant planning settings

Default panoramic depth: 7.0

Implant safety zone:

Radial distance: 1.50

Apical distance: 2.00

Surgical guide settings

Default manufacturer: Stratasys Eden 260V/350V/500V / OrthoDesk - MED610

Guide thickness: 2.800 mm (1.500-3.500)

Offset from teeth to guide: 0.075 mm (0.010-0.100)

Retention amount: 0.000 mm (0.000-0.200)

Offset from sleeve to guide: 0.100 mm (0.000-0.100)

“Experiment” with *offset from sleeve to guide* to achieve easy & precise insertion of paltop sleeves

Wide Sleeve and Narrow Sleeve

THE PALTOP DIGITAL GUIDED SYSTEM USES 2 SLEEVE
DIAMETERS, NARROW AND WIDE

The narrow sleeve can be placed in closer approximation to adjacent teeth or sleeves. During the planning phase of the treatment the appropriate sleeve should be selected by the digital designer.

All drills- twist, spade and countersink may be used with the wide DGS and wide sleeve. Only drills up to the diameters for the 3.75mm implant may be used with the narrow DGS/ narrow sleeve.

NARROW

Used for
3.25 and 3.75mm
diameter implants

Ø3.25mm

Ø3.75mm



WIDE

Can be used
for all implants.
Must be used for
4.2 and 5.0mm
diameter implants

Ø3.25mm

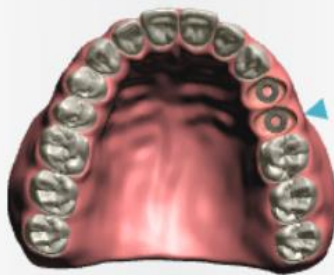
Ø3.75mm

Ø4.20mm

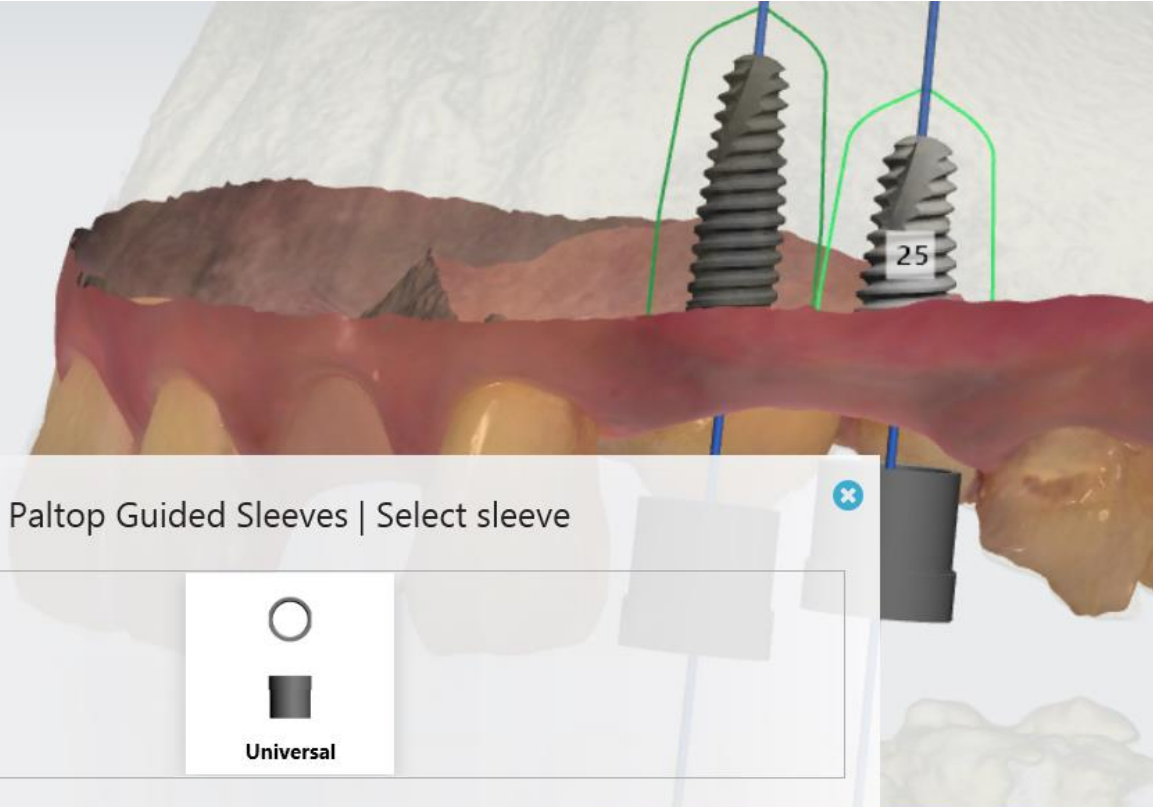
Ø5.0mm




Implant planning




Implant on tooth 25



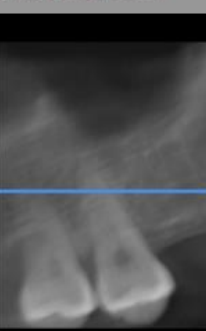


Implant measurements





Undo

anoramic view





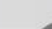

Paltop Guided Sleeves | Select sleeve






Universal

Inner diameter (Ø), mm	
Ø	4.0 5.0
Height, mm	6.2

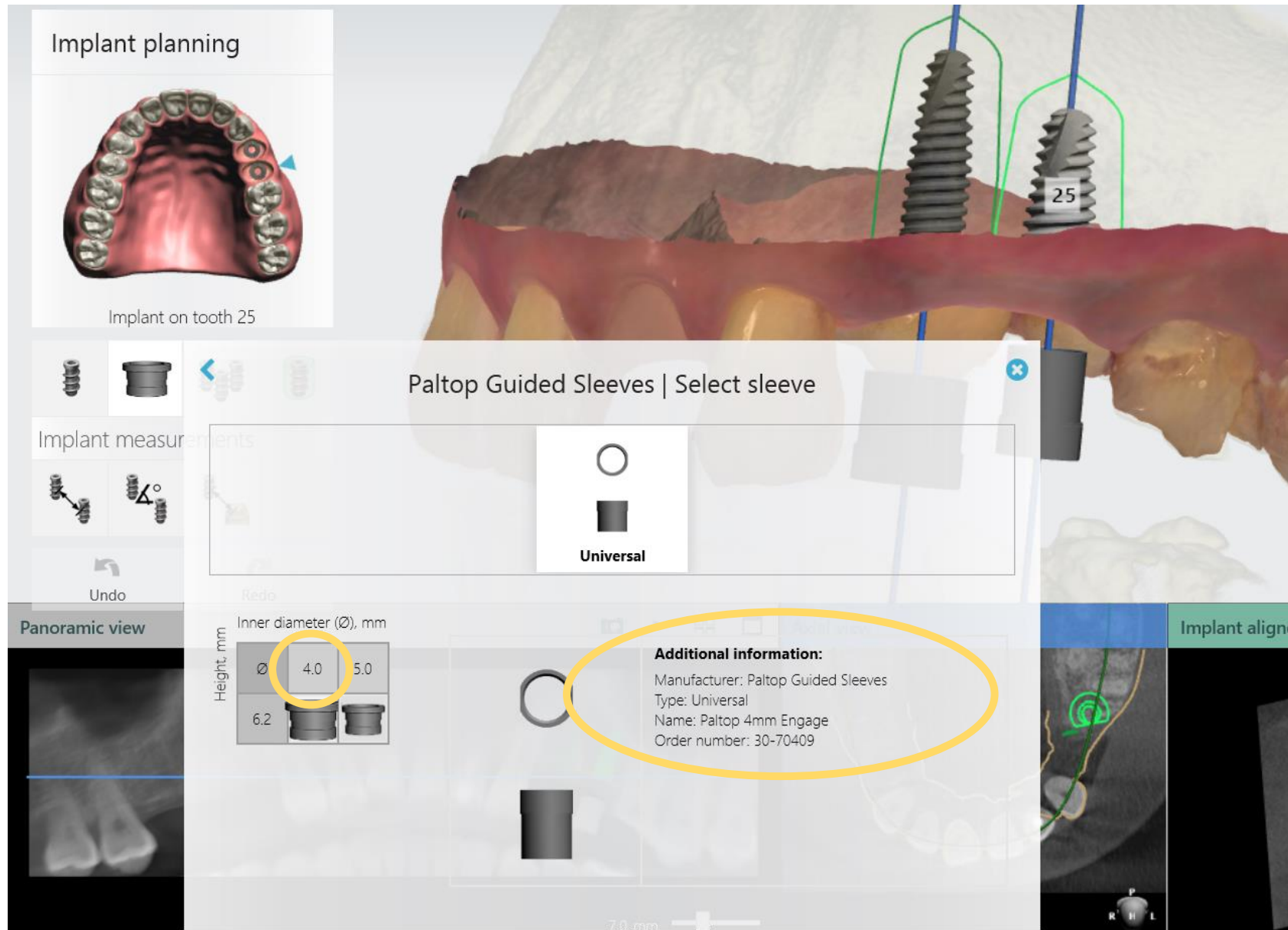



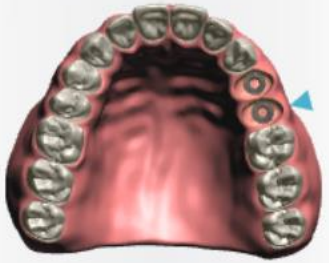
Additional information:
 Manufacturer: Paltop Guided Sleeves
 Type: Universal
 Name: Paltop 5mm Engage
 Order number: 30-70408

Wide
paltop sleeve

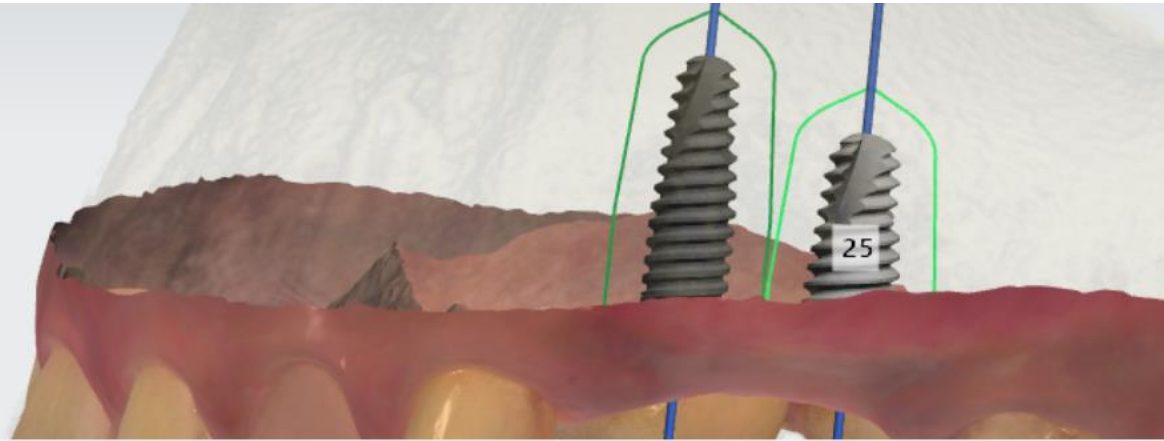


Narrow
paltop sleeve

Implant planning



Implant on tooth 25



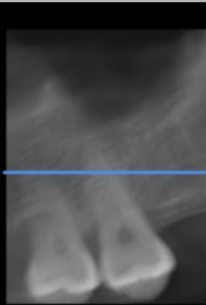
Steco | Select sleeve

Implant measurements



Undo

Panoramic view



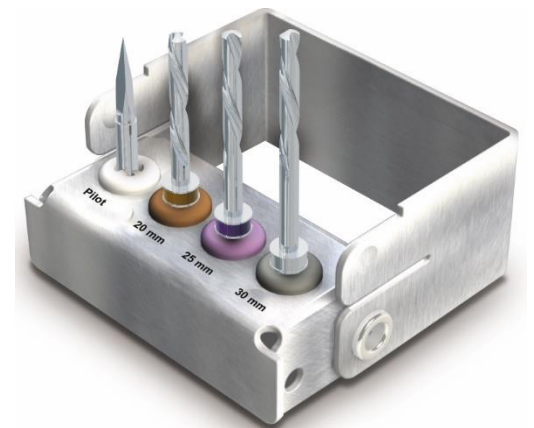
Redo

Pilot Universal

		Inner diameter (Ø), mm									
		1.16	1.3	1.5	1.6	2.0	2.2	2.35	2.5	2.8	3.5
Height, mm	5.0										
	6.0										
	10.0										

Additional information:
 Manufacturer: Steco
 Type: Universal
 Name: inner sleeve without funnel 2.0x5.0
 Order number: M.27.24.D200L5

Pilot paltop sleeve

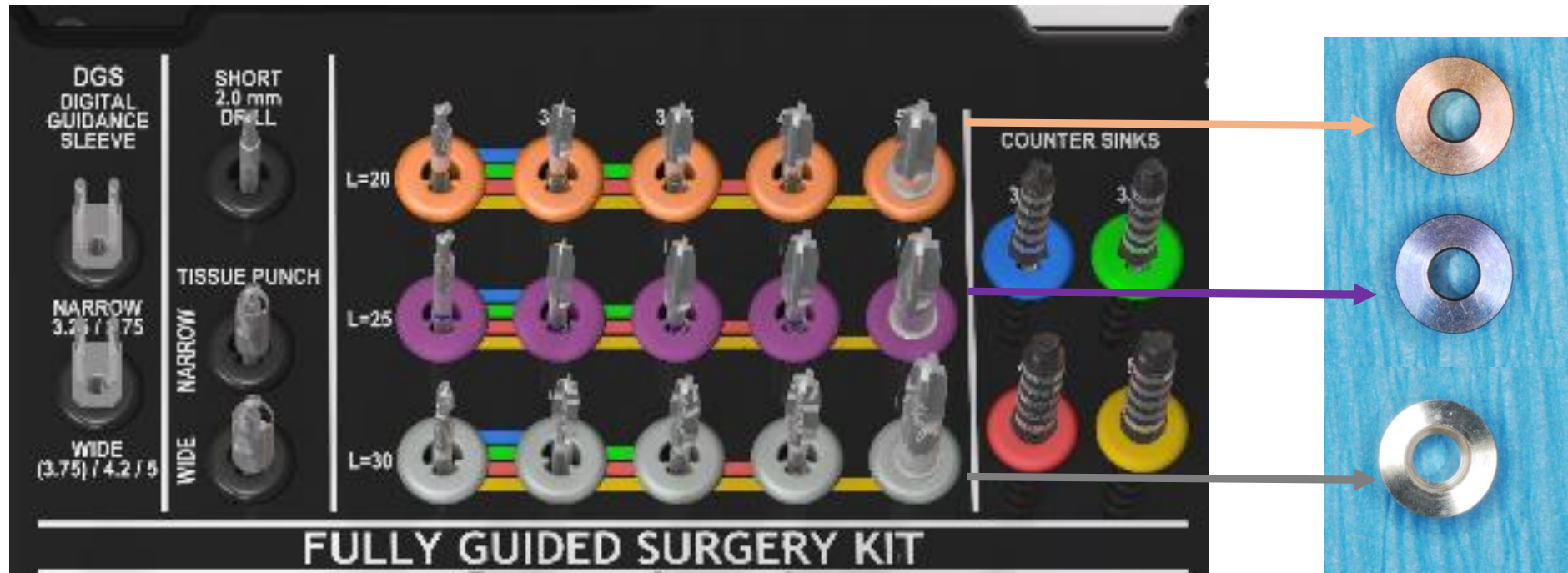


pal^{top} sleeves are anodized in accordance to drill length:

20mm length drill

25mm length drill

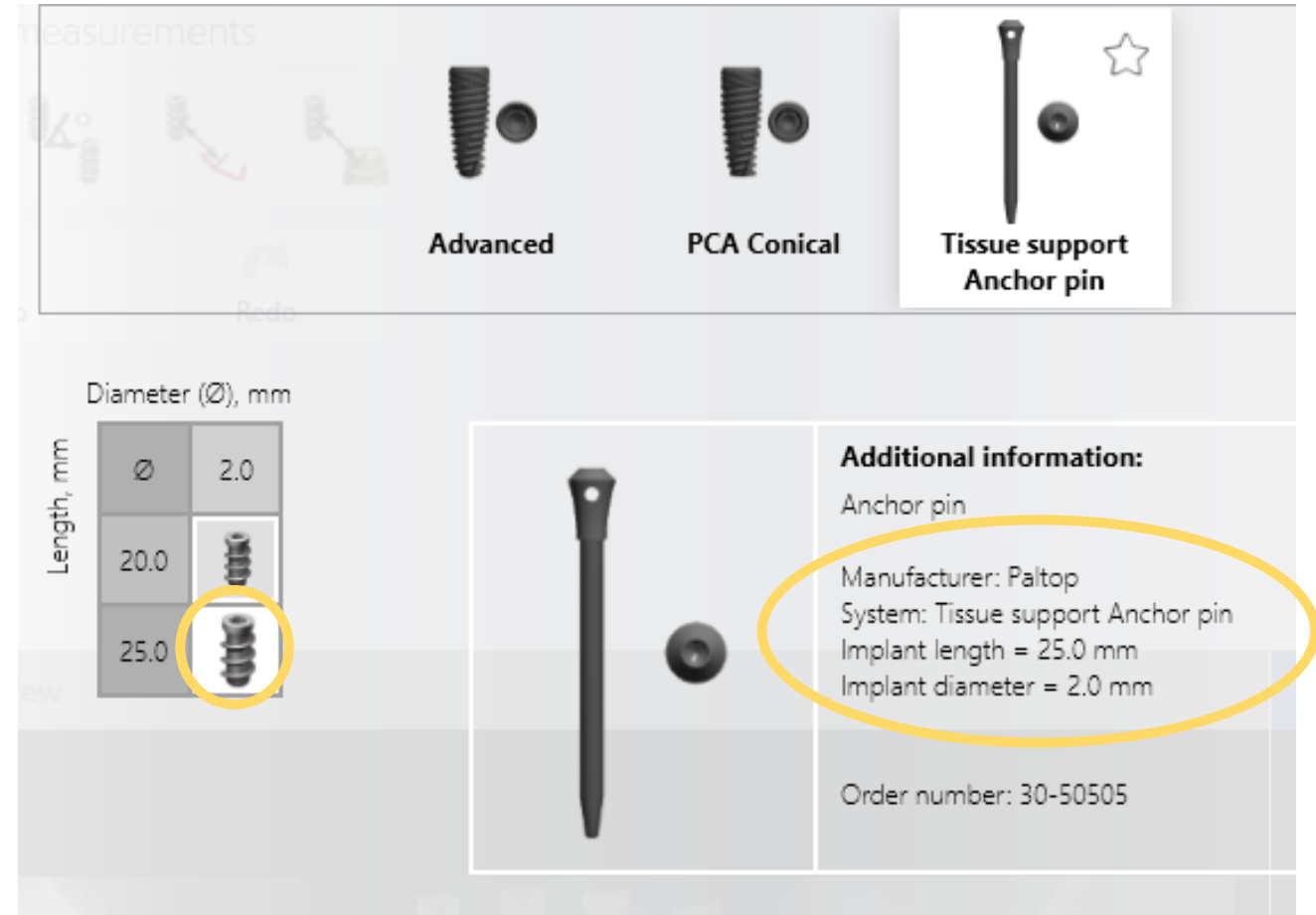
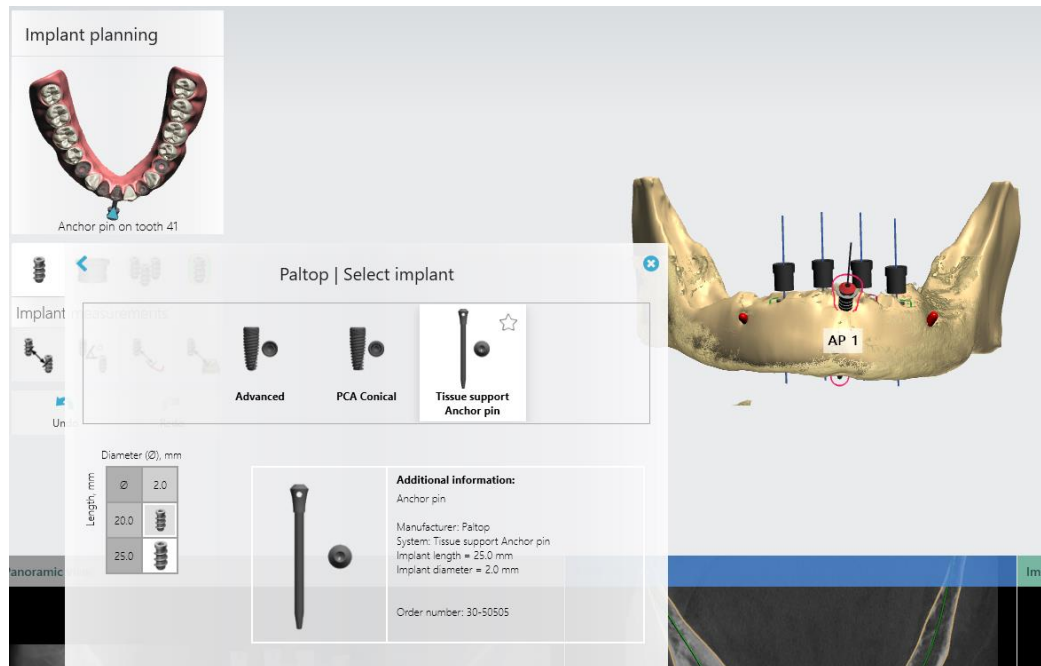
30mm length drill



paltop anchor pins



Choose 25mm Length



For further instructions on paltop guided service go to:

<http://paltopdental.com/content/paltop-digital-service>



Downloads



PALTOP BOOK



LIKE US ON
FACEBOOK

- Updates about new products
- News from the implantology world
- Important events
- Live chats with professionals

Fully Guided Surgical System



Fully Guided Surgical System- Instructional Video



2nd Generation Fully Guided Surgical System [download](#)